

Pack Balanza



Nuevo Pack Balanza con Cesar o Hit

Te presentamos el nuevo Pack Balanza. Lo puedes pedir con nuestro robusto terminal Punto de Venta (TPV) metálico Cesar o con nuestro moderno TPV Hit. Te ofrecemos la mejor solución para tu tienda con necesidad de pesar alimentos. Éste pack de Terminal + Soporte + Cajón portamonedas, te ofrece la posibilidad de tener todo lo que necesitas bien organizado. Con la opción de adjuntar una impresora térmica de última generación, un visor para clientes VFD 2x20 y/o un scanner de códigos de barras, te engloba la solución definitiva para tu local.

Características

- **Soporte metálico Balanza para colgar via VESA el Cesar o Hit**
- **Terminal Fanless, silencioso y fácil de desmontar.**
- Pantalla táctil Capacitiva de 15" LED con resolución de 1024x768 (Cesar)
- Eficiencia y mayor potencia con CPU Intel Celeron Quad Core 2,0GHz (Hasta 8 Gb RAM)
- Con gran variedad de conexiones:
 - **Cesar :** USB2.0 x 6 ; RS232 x 3; PS/2 x 1; LAN x 2; Line Out x 2; MIC x 2; Mini PCI-e slot x 1 (mSATA)
 - **Hit:** USB 2.0 x 5; USB 3.0 x 1; Rs232 x 5; PS/2 x 1; LAN x1; Line Out x1; MIC x1; HDMI x1
- **Cajón Portamonedas Metálico de 410 mm (Ancho) x 415 mm (Profundo) x 100mm (Alto)**
 - 2 Ranuras Frontales para transacciones sin efectivo
 - 8 Monederos (extraíbles o ajustables) y 4 billetteros- 3 posiciones de llave



Hit



Cesar

Specifications

Processor(CPU) & Chipset	Intel® Celeron® J1800 Dual Core (2.41 GHz 1M Cashe) Intel® Celeron® J1900 Quad Core (2.0 GHz 2M Cache) System on chip (SoC)
Memory	2GB DDR3L SoDIMM (Up to 8GB)
Storage	2.5", SATA-III SSD 64GB
Display	15", 1024 X 768, 24Bit Luminance : 300 cd/m ² , Backlight : LED
HDMI	1 EA (Intel® HD Graphics)
LAN	1 EA (RealTek Gigabit LAN)
Serial(RS-232C)	5 EA (DSUB-9p x 2EA / RJ-45 x 3EA)
USB	4 EA (I/O) (USB3.0 & 2.0), 2 EA (Rear) (USB2.0)
Audio	1 EA (Line-Out)
Speaker	1 EA (1W)
Cooler & FAN	Fanless
Power Adaptor	60[W], Input AC 100~240V/50~60HZ, DC 12V/5A
Dimension(mm)	384(W) x 347(H) x 225(D) (With Stand, With SCR)
Weight	4.8 kg
OS Supported	Microsoft® POSReady7 / Windows 10 IoT Linux / Android

Optional

OS	Microsoft® POSReady7 / Windows 10 IoT
Storage	2.5", SATA-III HDD 500GB
Touch Panel	15", 5-Wire Resistive Touch (Bezel type) 15", Projective Capacitive Touch (Bezelless type)
Dual Display	9.7", TFT-LCD, 1024x768, LED panel (Touch)
Customer Display	VFD type, 20 Characters X 2 Lines, Serial(RS-232C)
WIFI	802.11n, 150Mbps (External USB Module)
Secure Card Reader	EMV1, EMV2, MSR ISO Track1/2/3
Wall Mount	Fixed Type / Swivel Type (75x75, 100x100mm VESA)
Case Color	White&Black / Black / Black&White



Hit



Cesar

Key Features

※ Product's Design and Specifications can be changed without any notification.



1 · I/O Port located at the top of the unit



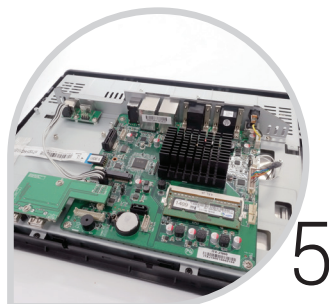
2 · Toolless for faster services



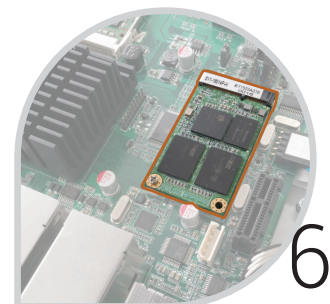
3 · 9.7inch (4:3) Dual Touch Display



4 · Several ways to mount



5 · Simple internal structure design



6 · An mSATA slot for dual SSD

Absolutely desirable. CESAR

Cesar system is here---exquisite all-in-one system with several models available for your applications. Performance you can feel, a product you can count on.

Main Board	15" Cesar Core i3/i5/i7 All-in-one system PP8300 (PP8500, PPB700)-25	15" Cesar J1900 All-in-one system (Fan-less) PP8100-15
CPU	Socket G(rPGA-989) Support IVY & Sandy Bridge Intel® Core i5/i3 Dual Cores CPU Support: Intel® Core i5-3210M (2.5GHz@35W) Intel® Core i3-3110M (2.4GHz@35W) Intel® Core i5-2540M (2.6GHz@35W) Intel® Core i7-3XXX(@35W)	Intel® Celeron® Processor J1900 (2M Cache, up to 2.42 GHz) Integrated
Chipset	Intel HM76 Express Chipset	
System Memory	2x SO-DIMM (204pin) Slot, DDR3 1333 MHz, Max 8GB Registered DIMM or ECC DIMM is not supported	2x SO-DIMM (204pin) Slot, DDR3 1333 MHz, Max 8GB Registered DIMM or ECC DIMM is not supported
LCD Panel		
Panel Size	15"	15"
Maximum Resolution	1024 x 768	1024 x 768
Brightness	250 cd/m ²	250 cd/m ²
Contrast Ratio	600:1	600:1
Response Time	8 ms	8 ms
View Angles (H/V)	160 / 140	160 / 140
Touch Panel	Projected Capacitive Multi-Touch Panell (10 point)	10 points PCAP (Proyective Capacitive)
Storage		
HDD	2.5" SATA interface x 2	2.5" SATA interface x 2
Expansion		
PCI-E Slot	x 1	x 1
Mini PCI-E Slot	x 1(Support SIM card)	x 1(Support mSATA)
Power		
Power Adaptor	Input AC 100-240V 2.5A 50/60Hz, Output DC 12V 6.66A	Input AC 100-240V 2.5A 50/60Hz, Output DC 12V 6.66A
I / O		
USB	x 4 USB2.0 & x 2 USB3.0	x 6 USB2.0
Serial	x 4 (with 0V/ 5V / 12V power selectable)	x 3 standard RS-232 COM1 with 5V /12V power selectable
LAN	x 1	x 1
2nd VGA Output	x 1	x 1
PS/2(Keyboard)	x 1	x 1
Audio	x 1 Line Out & x 1 Microphone In	x 2 Line Out & x 2 Microphone In
Control/indicator		
Power Button	x 1	x 1
LED Indicators	Power (RED)	Power (RED)
Optional Peripherals		
Magnetic Card Reader	ISO Track 1/2/3, USB interface	ISO Track 1/2/3, USB interface
VFD Customer Display	20 x 2 characters, RS-232 interface	20 x 2 characters, RS-232 interface
Second Display	8"/10.4" (800 x 600) and 15"(1024x768)	8"/10.4" (800 x 600) and 15"(1024x768)
Second HDD	2.5' SATA interface	-
Others	WIFI, iButton	WIFI, iButton
Dimensions		
15"PP Core i3/i5 system	358(W) X 70.5(L) X 293(H) mm	15"PP Cesar System 358(W) X 70.5(L) X 293(H) mm
Environment		
Operating Temperature	0°C ~ 40°C (32°F ~ 104°F)	0°C ~ 40°C (32°F ~ 104°F)
Storage Temperature	- 20°C ~ 60°C (-6°F ~ 140°F)	- 20°C ~ 60°C (-6°F ~ 140°F)
Operating Humidity	10% - 80% RH non condensing	10% - 80% RH non condensing
Storage Humidity	10% - 80% RH non condensing	10% - 80% RH non condensing



Pos Iberica Solutions, S.L

Travessera de Dalt 69

08024 Barcelona

Tel: 932853089 - Fax: 932953059

Web: www.posiberica.com

Mail: comercial@posiberica.com