

TD777

7" Colorful Customer Display

Redefine your Customer Display!

ESC/POS Command Compatible



Stand-alone model with 1 poles

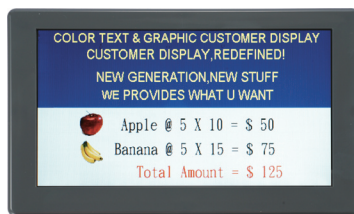


Stand-alone model
with 2 poles.



Colorful Frame available

Piano Black / Shiny White /
Passion Red / Noble Grey



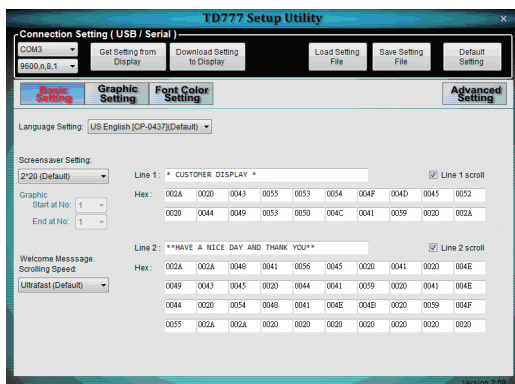
- Supports 11 command modes included EPSON and Logic Control command.
- Colorful Image and colorful Font could be shown simultaneously.
- Support JPEG/BMP/PNG/TIF/GIF image file.
- RS232 or USB interface.
- Vesa Mounting (75mm x 75mm) support.
- OPOS/JPOS driver is standard.



TD777 Customer Display

Specification

Display Area	154 (H) x 86 (V) mm
Number of Pixel	480 (H) x 234 (V) RGB pixel
Font Size	24 x 24 dot
Back-light	Single LED (Side-Light Type)
White luminance (Center)	400 cd/m2
Interface	USB / RS232
Command Mode	ULTIMATE, EPSON, LD540, AEDEX, UTC/S, UTC/P, ADM788, DSP800, CD5220, EMAX, LOGIC CONTROL
Language	Traditional Chinese, Simplified Chinese, Korean, Arabic, Turkish, Persian, US English, Int'l English, Bosnia, Croatian, Czech, Danish, Dutch, Estonian, Faroese, Finnish, Flemish, French, Fr Canadian, German, Greek, Hebrew, Hungarian, Icelandic, Indonesian, Irish, Italian, Katakana, Latvian, Lithuanian, Norwegian, Polish, Portuguese, Romanian, Russian, Slovene, Slovak, Spanish, Swedish...



All the setting could be easily finished with Free Utility.

